

**Wireless USB Optical RF Mini Mouse 800**  
GME223R USER MANUAL

Read this guide thoroughly and follow the installation and operation procedures carefully to prevent any damage to the unit and/or any devices it connects to:

**This package contains:**

- 1 Wireless USB Optical RF Mini Mouse 800
- 1 Carrying case
- 1 USB battery charger cable
- 1 USB extension cable
- 1 User manual
- 2 batteries
- 1 Warranty registration card

© 2003 IOGEAR®. All Rights Reserved.  
All brand names and trademarks are the registered property of their respective owners.  
PKG-M0063



**1. Welcome**

Congratulations on your new IOGEAR purchase!

IOGEAR's USB RF Wireless Optical Mini Mouse is an excellent tool for mobile professionals. RF- or 'radio frequency'- is a power-efficient wireless technology that allows you the freedom of a wireless mouse. The small and portable design saves precious space in your mobile work area, and it is one less tangled wire in your laptop carrying case. The ergonomically contoured design and optical sensor offer comfortable use on most surfaces, without the need for a mouse pad.

This mouse features 800 dpi resolution, meaning it offers twice the accuracy of typical mouse movement, which is ideal for graphic designing or any other type of computing where precision matters. This unit is USB ready, Plug-n-Play and hot pluggable.

For added convenience, the RF Mini Mouse also features a power On/Off switch to avoid battery drainage during travel, and a USB charger cable for convenient charging through the USB port on laptops. This mouse is the ultimate tool for the road warrior of today.

For general troubleshooting information, FAQ, and other related documents in our T.I.L. (Technical Information Library), we encourage you to check out our web site -- <http://www.iogear.com/support>

**Contact Information:**

23 Hubble Drive Irvine, CA 92618  
(P) 949.453.8782 (F) 949.453.8785  
[www.iogear.com](http://www.iogear.com)

**2. Features**

- 800 dpi resolution offers twice the accuracy of typical mouse movement
- Operates on most surfaces without the need for a mouse pad
- Works up to 4 feet from your computer and can easily be positioned wherever it is most comfortable
- Plug-n-Play and Hot Pluggable
- Light and very portable, great for mobile professionals
- Saves precious space in your mobile work area
- Power On/Off switch conserves electricity for maximum battery life
- Comes with a USB charger to allow you to charge batteries through the laptop
- Ergonomically contoured design for comfortable use
- 3 Year Limited Warranty

**3. Requirements**

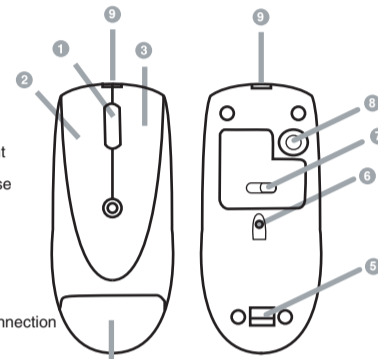
- Windows98, 98SE, 2000, ME, XP
- Mac OS X or later  
(For Mac 9.x or earlier, functions only as a one button mouse)
- Available USB port

**4. Other IOGEAR Products**

- 4-D Web Cruiser™ (GME421)
- Phaser-RF Wireless Mouse (GME322R)
- Hi-Speed USB 2.0 A to B Cable (G2LUAB06)
- Hi-Speed USB 2.0 PCI Card (GIC220U)
- Hi-Speed USB 2.0 PCMCIA CardBus Card (GPU202)
- USB KVMP Switch (GCS1712/GCS1714)

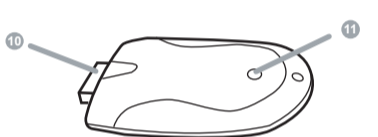
**5. Pictorial Introduction**

1. Scroll Wheel
2. Left Click Button
3. Right Click Button
4. Battery Compartment
5. Battery Cover Release
6. Optical Sensor
7. Power On/Off Switch
8. Connect Button
9. Battery Charging Connection



For the USB Receiver:

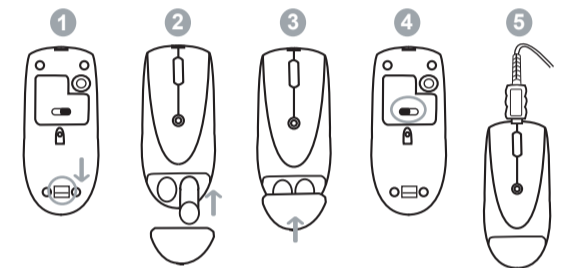
10. USB Connector
11. Connect Button



**6. Installation Instruction**

**BATTERY INSTALLATION**

1. Pull the battery cover release toward the direction as indicated in the drawing
2. Insert the batteries (included in the package) into the battery compartment
3. Put the cover back on.
4. Make sure the power On/Off switch is at ON position. We do recommend that you charge the batteries for 10 hours before using the mouse.
5. To charge the batteries, just plug the USB charger cable into the USB port on you computer, and the mouse, and leave it on for a few hours.



**WINDOWS**

1. Turn on your computer, and let it boot all the way into the operating system
2. Insert the USB receiver into one of the USB port on your computer. You will see a dialog box, indicating that the computer has detected a new USB device. For Windows 98/98SE, a dialog box will come up to prompt you to insert the 98/98SE CD into the CD ROM in order to obtain the USB driver. For the computers where the USB ports are placed in an inaccessible area, you will need to plug the USB extension cable (included in the package) into the USB port on the computer, then plug the receiver into the USB extension cable
3. After a few seconds, the light in your mouse will begin to flicker. This is normal, and should last until the mouse and the receiver are connected.
4. Press the connect button on the mouse, then press the connect button on the receiver. Press firmly for 2-3 seconds.
5. After you release the connect button, the mouse is ready for use.

**MAC**

This mouse is Plug-n-Play for Macs. Just plug the receiver in the USB port, then press the connect button on both the mouse and the receiver. You will be able to use the mouse immediately after that.

**7. Operation**

Please avoid using this mouse on glass, mirror and metal surfaces.

Please do not place any other RF unit close to the mouse and its receiver to avoid interference.

When travelling, please turn the power On/Off switch to the OFF position in order to save battery life. You do not need to turn the power off if the mouse is sitting still, the power consumption will be lowered automatically after you stop using the mouse for a while.

When the mouse movements turn sluggish, it may be the time for you to recharge the batteries. Just plug the USB charger cable into the USB port on you computer, and the mouse, and leave it on for a few hours. You don't need to turn off the power, and you can use the mouse when it is charging the batteries. A completely depleted battery requires 10 hours to charge.

**Note: The tiny rattling noise you hear when you shake the mouse is normal. This mouse comes with a motion sensor which wakes up the mouse from the power saving mode when you move the mouse. The tiny rattling noise is caused by the motion sensor.**

**8. Specifications**

Function	Specification	
Battery Type	Ni-Mh	
Frequency Band	27.015 MHz	
Interface	USB	
Number of IDs	2048	
Operating Range	4 ft. (1.2m)	
Power	Amps	< 20mA
	Voltage	2.4 V
Resolution	800 dpi	

**9. Radio & TV Interference Statement**

**WARNING!!!** This equipment generates, uses and can radiate radio frequency energy and, if not installed and used in accordance with the instruction manual, may cause interference to radio communications. This equipment has been tested and found to comply within the limits for a class B device, pursuant to Subpart J of Part 15 of the FCC rules. These limits are designed to provide reasonable protection against harmful interference in a commercial environment. Operation of this equipment in a residential area is likely to cause interference, in which case the user at his own expense will be required to take whatever measures may be required to correct the interference. There is no guarantee that radio frequency interference will not be created in particular locations.

IOGEAR® is not responsible for any radio or television interference caused by unauthorized modification of your mechanism or cables.

**10. Limited Warranty**

IN NO EVENT SHALL THE DIRECT VENDOR'S LIABILITY FOR DIRECT, INDIRECT, SPECIAL, INCIDENTAL, OR CONSEQUENTIAL DAMAGES RESULTING FROM THE USE OF THE PRODUCT, DISK OR ITS DOCUMENTATION EXCEED THE PRICE PAID FOR THE PRODUCT.

The direct vendor makes no warranty or representation, expressed, implied, or statutory with respect to the contents or use of this documentation, and especially disclaims its quality, performance, merchantability, or fitness for any particular purpose.

The direct vendor also reserves the right to, but not limited to, revise or update the device or documentation without obligation to notify any individual or entity of such revisions, or updates. For further inquires please contact your direct vendor.