

## Phaser™ Hand-Held RF Wireless Mouse with Laser Pointer

GME322RW1 English User Manual

Read this guide thoroughly and follow the installation and operation procedures carefully to prevent any damage to the unit and/or any of devices it connects to.

**Package Content:**  
 (1) IOGEAR wireless RF mouse  
 (1) USB receiver  
 (1) USB to PS/2 converter  
 (1) User manual  
 (1) Warranty registration card  
 (2) AAA batteries

© 2004 IOGEAR™ All Rights Reserved.  
 All brand names and trademarks are the registered property of their respective owners.  
 PKG-M0055/W1E



### 1. Overview

The Phaser Wireless Trackball Mouse is of the latest in computer peripheral technology. With the advent of wireless technology in computer mice, the days of wired-mice are a thing of the past. Users of wired-mice all share the common frustrations of short cords, kinks in the wires, and plain functionality. Since the Phaser Wireless Trackball Mouse is completely wire-free, you can browse, surf, or use your computer in comfort, as well as style.

Presentations have never been simpler. With an integrated laser pointer, the Phaser Wireless Trackball Mouse can make your next presentation a snap. Standing in front of a blinding projector is now a thing of the past. The freedom to move around, without being tied-down by ugly cables, brought to you by IOGEAR.

Once again, IOGEAR lays the standard for connectivity!

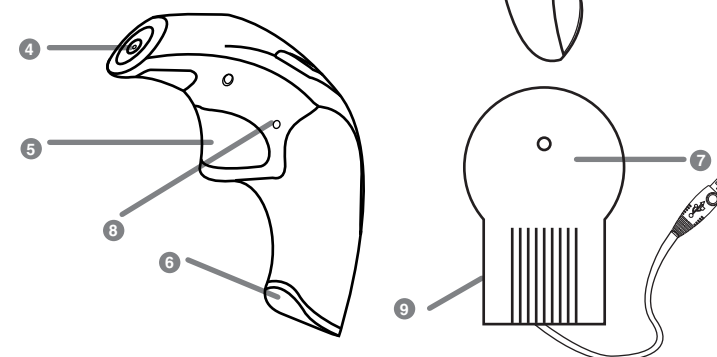
With a growing number of the general population with Internet access, we encourage our customers to check out our web site <http://www.iogear.com/support> for general troubleshooting information, FAQ, and other related documents in our T.I.L. (Technical Information Library).

#### Contact Information:

23 Hubble Drive Irvine, CA 92618  
 (P) 949.453.8782 (F) 949.453.8785  
[www.iogear.com](http://www.iogear.com)

### 2. Pictorial Introduction

1. Thumb Operated Scroll Ball
2. Laser Pointer Activator
3. Two Mouse Buttons
4. Laser Pointer
5. Second Left Click Button
6. Battery Compartment
7. Radio Receiver
8. ID Reset for the Mouse
9. ID Reset for the Receiver



### 3. Features

- Ideal for making presentation
- Control your computer from up to 50' away with no wires
- No need to point the mouse toward the computer
- Advanced RF technology provides accurate cursor movement
- Thumb operated track ball eliminates the need to put the mouse on any surface
- Laser pointer makes this mouse an excellent tool for both classroom and field presentation
- Multiple IDs allow multiple units to operate in the same room without interfering with each other
- Plug-N-Play
- USB and PS/2 compatible
- Ergonomically contoured design for comfortable use
- 3 Year Limited Warranty

### 4. Requirement

**For PC Users**  
 Windows® 98, 98SE, 2000, ME, XP

### 5. Battery Installation

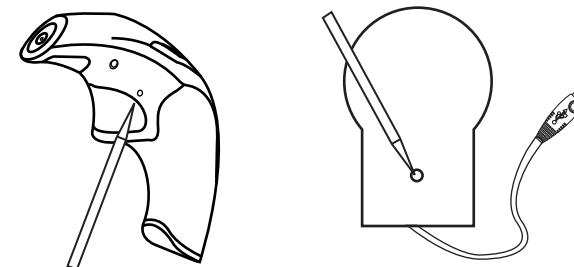
Remove the holding screw from the bottom of the Phaser which will allow you to detach the bottom cover.

Insert the batteries as shown, ensuring the positive and negative ends match up exactly as shown in the diagram.

When finished replace the battery cover and holding screw.

### 6. Installation Instruction

1. With your computer turned off, plug the Radio Receiver into your computer's USB port. For computers with PS/2 only, plug the USB to PS/2 Adapter on the Radio Receiver and then plug it on the PS/2 mouse port.
2. Turn your computer on.
3. Using a sharp object (such as a pencil or pen) to press the recessed reset buttons on both the Radio Receiver and the Mouse (button # 8 & 9). You only need to do it once unless you reset the mouse with another Radio Receiver.



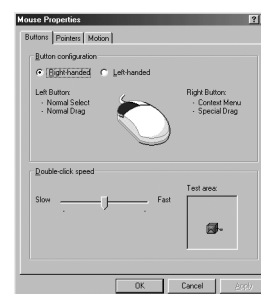
4. You will notice that the Phaser has been detected and is working as a regular mouse with trigger (Button # 5).

5. To use multiple units in the same room (or building), you will need to set each Receiver with the corresponding mouse. All mice will operate in different frequencies, thus not interfere with each other.

### 7. Operation

#### Mouse Control Panel Instructions

Here you may set the mouse to your hand's preference. If you are left-handed or right-handed, you can set the mouse to accommodate your click preference.



Ex. A left-handed mouse commonly has the left-mouse-button as the primary button and the right-mouse-button is commonly the option button.

Here you may set your preference for mouse clicks. Normally, the user would "double-click" to open a document or folder. You may now choose to "single-click" to open documents in folders. Now one click can equal two clicks.

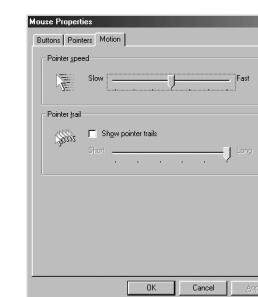
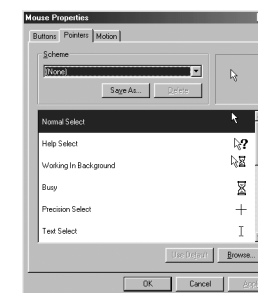
**Double-Click Speed:** To set the speed of your mouse's double-click speed, you can slide the bar to increase or decrease the amount of time between clicks.

### Operation Con'd

#### POINTERS TAB

This tab is an extension of your Microsoft Windows Desktop schemes. You may choose different schemes for your mouse icons here.

Pointer Shadow will leave a dark shadow over the desktop, to dramatize the presence of the mouse pointer.



### 8. Specification

Function	Specification
Channels	1
Computer Interface	USB and PS/2
Console Connectors	Mouse USB and PS/2
Dimensions	Height 1"
	Length 4.6"
	Width 3"
Frequency Band	27.045 MHz
Housing	Case Plastic
IDs	256
Operating Range	50 ft
Power Source	2 AAA batteries for the mouse, receiver bus powered

### 9. Radio & TV Interference Statement

**WARNING!!!** This equipment generates, uses and can radiate radio frequency energy and, if not installed and used in accordance with the instruction manual, may cause interference to radio communications. This equipment has been tested and found to comply within the limits for a class B device, pursuant to Subpart J of Part 15 of the FCC rules. These limits are designed to provide reasonable protection against harmful interference in a commercial environment. Operation of this equipment in a residential area is likely to cause interference, in which case the user at his own expense will be required to take whatever measures may be required to correct the interference. There is no guarantee that radio frequency interference will not be created in particular locations.

IOGEAR® is not responsible for any radio or television interference caused by unauthorized modification of your mechanism or cables.

### 10. Limited Warranty

IN NO EVENT SHALL THE DIRECT VENDOR'S LIABILITY FOR DIRECT, INDIRECT, SPECIAL, INCIDENTAL, OR CONSEQUENTIAL DAMAGES RESULTING FROM THE USE OF THE PRODUCT, EXCEED THE PRICE PAID FOR THE PRODUCT.

The direct vendor makes no warranty or representation, expressed, implied, or statutory with respect to the contents or use of this documentation, and especially disclaims its quality, performance, merchantability, or fitness for any particular purpose.

The direct vendor also reserves the right to, but not limited to, revise or update the device or documentation without obligation to notify any individual or entity of such revisions, or updates. For further inquiries please contact your direct vendor.