

GCS1808iKITU

8-Port IP Based KVM Kit with USB KVM Cables



8-Port IP Based KVM

The IOGEAR GCS1808i is an IP-based KVM switch that allows both local and remote operators to monitor and access multiple computers. Remote users access the switches over the Internet through a web browser using TCP/IP protocol. GCS1808i supports up to 64 user accounts and allows 32 concurrent user logins for a single-bus computer access. The Message Board, a built-in feature that resembles an Internet chat program, lets users communicate with each other. The ability to exchange information in real time allows users to manage the KVM switch and connected computers in a smooth and efficient manner.

The GCS1808i features many security tools such as the 128-bit SSL encryption for browser access and RC4 128-bit encryption for secure data transmission. GCS1808i also supports third party authentication such as RADIUS, LDAP, LDAPS, and MS Active Directory. In addition, IP and Mac filters provide added security against unauthorized access. The Log Server, a Windows-based administrative utility, records all the events that take place on the GCS1808i and writes them to a searchable database.

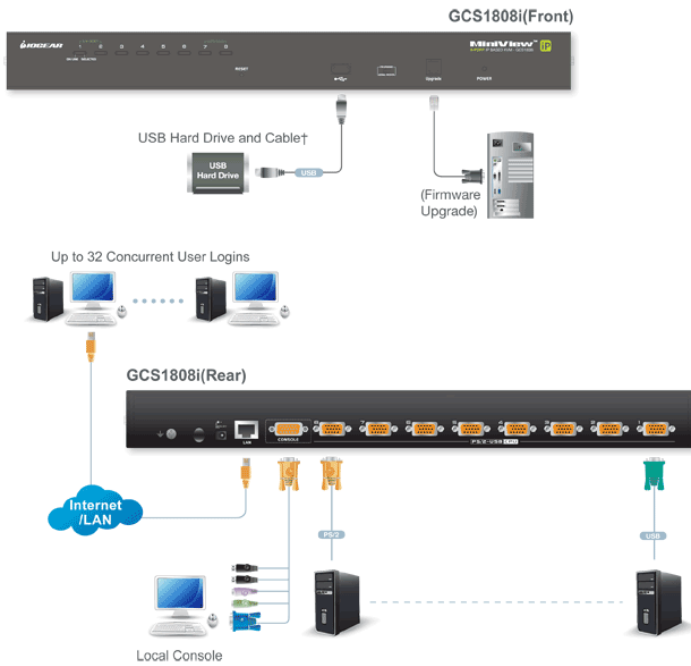
Once logged in to GCS1808i, users can manage the computers via the virtual remote desktop window. Mouse DynaSync™ optimizes the remote and local cursors synchronization.

- 8-port IP-based KVM switch - monitor and control up to 8 computers from both local and remote KVM consoles
- Hot pluggable - add or remove computers without having to power down the switch
- Multiplatform support - Windows®, Linux® and Mac - Front panel USB port allows connected computers to access USB peripherals such as USB flash drives or hard drives*
- Dual Interface - the automatic interface detection supports computers with either PS/2 or USB connections
- Complete keyboard and mouse emulation for error free booting
- Supports USB keyboards for Windows® and Mac
- Superior video quality - up to 2048x1536 DDC2B for the local console; up to 1600x1200 @ 60Hz / 24-bit color depth for remote access
- Video DynaSync™ - stores the local monitor's EDID (Extended Display Identification Data) to optimize display resolution
- 19" Rack mountable; a mounting kit is included
- Easy-to-Use Interface
- Browser-based or AP GUIs, including a menu-driven OSD for the remote console
- Windows client and Java client software support
- Menu-driven OSD for the local console
- Multiplatform client support (Windows®, Mac OS X, Linux®)
- Multi-browser support (IE, Mozilla, Firefox, Safari, Opera, Chrome**)
- Panel array mode enables user to monitor multiple servers from a single screen
- Advanced Security
- Secure keyboard/mouse/video transmission via RC4 128-bit encryption
- Supports SSL 128-bit data encryption and RSA 1024-bit certificates for secure user logins from a browser
- Two level password security (administrator and users) - up to 64 user accounts with separate profiles for each
- Third party authentication supported: RADIUS, LDAP, LDAPS, MS Active Directory
- Supports IP and MAC filters
- Log in authentication required for both local and remote access
- Virtual Remote Desktop
- Resizable remote desktop window
- Message board allows logged in users to communicate with each other and allows a user to take exclusive control of the KVM functions
- Mouse DynaSync™
- On-screen keyboard with multi-language support

*Only systems connected with the USB KVM cables will be able to access the front USB port for system upgrades and shared peripherals

**The Chrome browser will work when connecting to the GCS1808i from a Windows OS when the most current Java version has been installed





Requirements

Package Contents

- **For best results during remote access:**
- Computers used to access the 8-Port IP Based KVM should have at least a P III 1 GHz processor and screen resolution should be set to 1024x768
- Internet connection speed of at least 128kbps
- Browsers must support 128-bit data encryption
- To run the Windows® client, DirectX 8.0 or higher is required
- To run the Java client, Sun's Java Runtime Environment (JRE) 6, Update 3, or higher is required
- To run the Log Server, Microsoft Jet OLEDB 4.0 (or higher) driver is required
-
- **Local Console:**
- 1 VGA monitor
- 1 USB or PS/2 Mouse
- 1 USB or PS/2 Keyboard
-
- **Local Computers:**
- Video graphics card with an HDB-15 VGA port
- Type A USB port and USB host controller
- or
- 6-pin mini-DIN keyboard and mouse port
-
- **Operating System**
- Windows Vista® (32-bit / 64-bit), Windows® 7 (32-bit / 64-bit), Windows® 8.x (32-bit / 64-bit)
- Apple Mac OS X 9.0 to 10.x
- Linux®

- 1 x GCS1808i 8-Port IP Based KVM
- 1 x KVM PS/2 Cable
- 4 x 6ft KVM USB Cable
- 4 x 10ft KVM USB Cable
- 1 x Console Cable
- 1 x Firmware Upgrade Cable
- 1 x Foot Pad Set (4 pcs)
- 1 x Power Adapter
- 1 x Mounting Kit
- 1 x Quick Start Guide
- 1 x Software CD
- 1 x Warranty Card

Specifications

Function	GCS1808iKITU	Dimensions	GCS1808iKITU
		Unit Dimensions	
		Height	1.75" (4.45cm)
		Depth	6.25" (15.88cm)
		Length	17.00" (43.18cm)
		Unit Package Dimensions	
		Height	9.25" (23.50cm)
		Depth	4.5" (11.43cm)
		Length	21.5" (54.61cm)
		Master Carton	
		Width	22.3" (56.64cm)
		Height	10" (25.4cm)
		Depth	9" (22.86cm)
		Master Carton Qty.	1
		Weight	
		Master Carton Wt.	14.5lb (6.59kg)
		Unit Pack Wt.	8.6lbs (3.9kg)
		Unit Wt.	5.7lbs (2.58kg)