

GCS1816i

16-Port IP Based KVM (TAA)



16-Port IP Based KVM

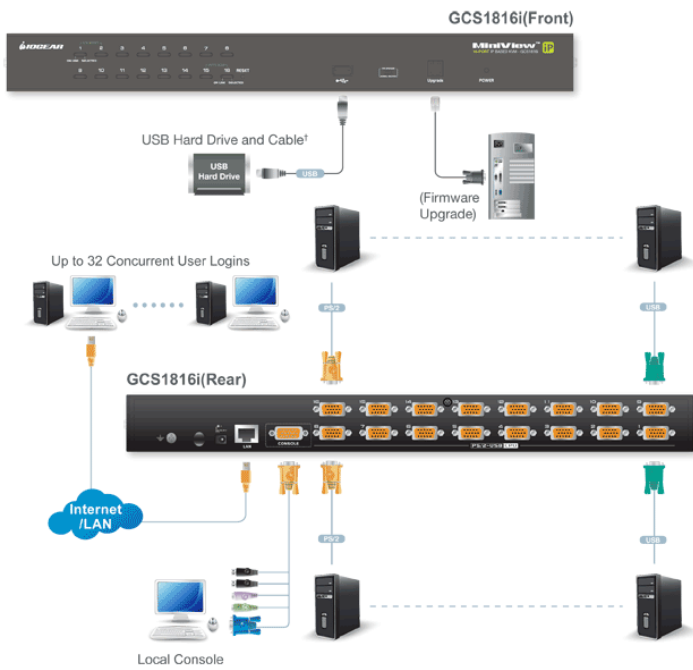
The IOGEAR's GCS1816i is an IP-based KVM switch that allows both local and remote operators to monitor and access multiple computers. Remote users access the switches over the Internet through a web browser using TCP/IP protocol. GCS1816i supports up to 64 user accounts and allows 32 concurrent user logins for a single-bus computer access. The Message Board, a built-in feature that resembles an Internet chat program, lets users communicate with each other. The ability to exchange information in real time allows users to manage the KVM switch and connected computers in a smooth and efficient manner.

- 16-port IP-based KVM switch - monitor and control up to 16 computers from both local and remote KVM consoles
- Hot pluggable - add or remove computers without having to power down the switch
- Multiplatform support - Windows®, Linux® and Mac
- Front panel USB port allows connected computers to access USB peripherals such as USB flash drives or hard drives*
- Dual Interface - the automatic interface detection supports computers with either PS/2 or USB connections
- Complete keyboard and mouse emulation for error free booting
- Supports USB keyboards for Windows® and Mac
- Superior video quality - up to 2048x1536 DDC2B for the local console; up to 1600x1200 @ 60Hz / 24-bit color depth for remote access
- Video DynaSync™ - stores the local monitor's EDID (Extended Display Identification Data) to optimize display resolution
- Custom ASIC provides an auto-sensing function that recognizes the position of each station on the installation
- Firmware upgradeable
- 19" Rack mountable; a mounting kit is included
- **Easy-to-Use Interface**
- Easy to operate - computer selection via front panel pushbutton LED's, intuitive OSD (on screen display), and hotkeys
- Browser-based or AP GUIs, including a menu-driven OSD for the remote console
- Windows client and Java client software support
- Menu-driven OSD for the local console
- Multiplatform client support (Windows®, Mac OS X and Linux®)
- Multi-browser support (IE, Mozilla, Firefox, Safari, Opera, Chrome**)
- Panel array mode enables user to monitor multiple servers from a single screen
- Auto Scan Mode to monitor connected computers
- **Advanced Security**
- Secure keyboard/mouse/video transmission via RC4 128-bit encryption
- Supports SSL 128-bit data encryption and RSA 1024-bit certificates for secure user logins from a browser
- Two level password security (administrator and users) - up to 64 user accounts with separate profiles for each
- Third party authentication supported: RADIUS, LDAP, LDAPS, MS Active Directory
- Supports IP and MAC filters
- Log in authentication required for both local and remote access
- **Virtual Remote Desktop**
- Resizable remote desktop window
- Message board allows logged in users to communicate with each other and allows a user to take exclusive control of the KVM functions
- Mouse DynaSync™ (see Additional mouse synchronization procedures)
- On-screen keyboard with multi-language support

*Only systems connected with the USB KVM cables will be able to access the front USB port for system upgrades and shared peripherals

**Chrome browser will not work when trying to connect to GCS1816i from Windows OS





Specifications

Function	GCS1816i
Computer Connections	
Direct	16
Port Selection	OSD; Hotkey; Pushbutton
Console Connectors	
Keyboard, Mouse, and Monitor	1 x SPHD-18 Male
Connectors	
Power	1 x DC Jack
LAN	1 x RJ45 Female
USB	1 x USB Type A
Computer/KVM	16 x SPDH-17 Female
Switches	
Reset	1 x Semi-recessed pushbutton
Port Selection	16 x Pushbutton
F/W Upgrade	1 x Slide
LEDs	
On Line	16 (Orange)
Selected	16 (Green)
Power On	1 (Dark Green)
10/100 Mbps	1 (Orange/Green-at LAN port)
Emulation	
Keyboard	USB, PS/2
Mouse	USB, PS/2
Video Performance	
Local	2048x1536; DDC2B
Remote	1600x1200@60Hz / 24-bit color depth
Scan Interval	1-255 sec.
Power Consumption	DC 5.3V; 11W
Environment	
Humidity	0-80% RH, Non-condensing
Operation Temperature	32-122 F (0-50 C)
Storage Temperature	-4~ 140 F (-20-60 C)
Housing	
Case	Metal

Dimensions	GCS1816i
Unit Dimensions	
Height	1.75" (4.45cm)
Depth	6.25" (15.88cm)
Length	17.00" (43.18cm)
Unit Package Dimensions	
Height	9.25" (23.50cm)
Depth	4.5" (11.43cm)
Length	21.5" (54.61cm)
Master Carton	
Width	22.3" (56.64cm)
Height	15.1" (38.35cm)
Depth	10.5" (26.67cm)
Master Carton Qty.	3
Weight	
Master Carton Wt.	29.20lbs (13.26kg)
Unit Pack Wt.	9lbs (4.08kg)
Unit Wt.	6.1lbs (2.76kg)