

GCS1942H

2-Port 4K Dual View KVMP Switch with HDMI Connection, USB 3.0 Hub and Audio (TAA)



- Maximize your high-end multi-monitor workstation with superior video resolution
- Share dual Cinema 4K HDMI-enabled monitors (4096 x 2160 @60Hz)
- Operate 2 HDMI computers with 1 keyboard, mouse, and 2 monitors
- Add another GCS1942H to expand up to four 4K monitors
- HDMI 2.0 compliant, HDCP 2.2 compliant

Enhance High-End Multi-Monitor Workstation

Maximize your high-end dual HD workstations by connecting them to the 2-Port 4K Dual View KVMP Switch with HDMI(R) Connection, USB 3.0 and Audio. Experience Cinema 4K resolutions along with rich bass and 7.1 surround sound while switching between both computers and sharing two USB 3.0 peripherals with the push of a button.

- Maximize your high-end multi-monitor workstation with superior video resolution
- Share dual Cinema 4K HDMI-enabled monitors (4096 x 2160 @60Hz)
- Operate 2 HDMI computers with 1 keyboard, mouse, and 2 monitors
- Add another GCS1942H to expand up to four 4K monitors
- HDMI 2.0 compliant, HDCP 2.2 compliant
- Allows independent switching of the KVM, USB, and audio devices
- Control/share USB3.0 peripherals between 2 computers; save money on duplicate devices
- Work on computer "A" without interrupting USB peripheral connectivity on computer "B"
- SuperSpeed 5Gbps transfer rate
- Computer selection via front panel pushbuttons, hotkeys, or mouse¹
- Supports 7.1 HD audio through HD²
- Full bass response for high quality 2.1 channel audio
- Mouse emulation or bypass feature supports most mouse drivers and multifunction mice
- Multi-platform support – Windows®7, Windows 8.1, Windows 10, Mac OS®, and Linux®
- Multilingual keyboard mapping supports English, French, and German keyboards
- Mac® keyboard support and emulation³
- RS-232 Commands⁴
- Auto-Scan Mode to monitor all computers
- Power on detection
- Hot pluggable
- Firmware upgradable
- Includes all KVM and audio cables

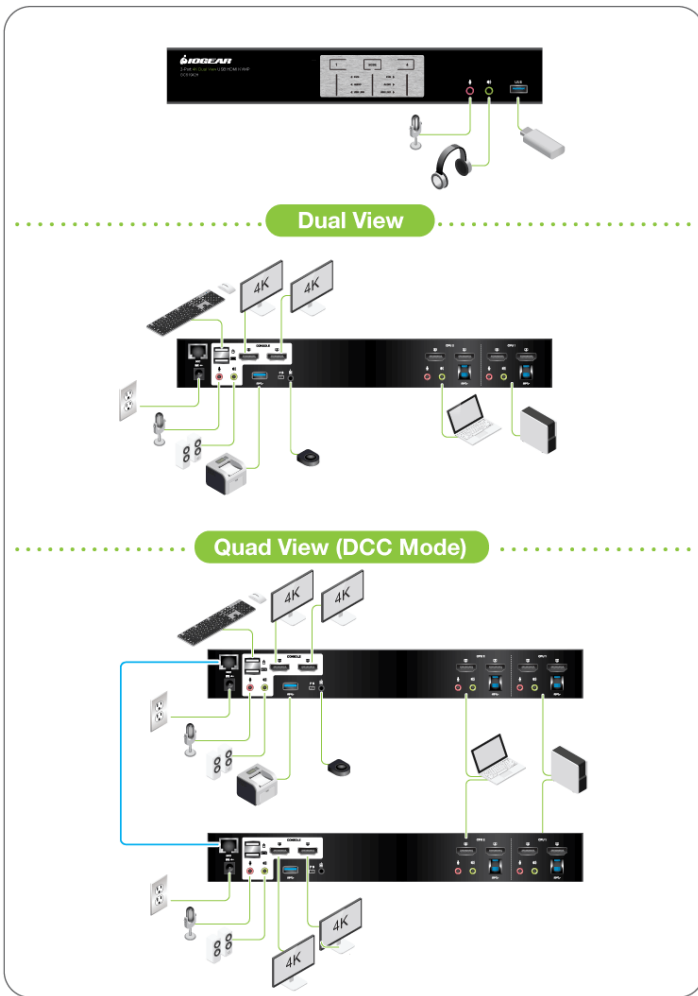
¹ Mouse port switching supported alongside mouse emulation mode using a USB 3-button mouse wheel.

² HD audio through HDMI cannot be switched independently.

³ PC keyboard combinations emulate Mac® keyboards.

⁴ DB9 to RJ-45 cable not included.





Requirements

Package Contents

- **Console**
 - 2 x HDMI-enabled monitors
 - Standard 104-key wired USB keyboard
 - Standard 2 or 3-button wired USB mouse
 - Microphone and speakers (optional)
 - **Computer**
 - 2 x HDMI ports
 - Type-A USB port
 - Audio ports (optional)
- 1 x 2-Port 4K Dual View KVMP Switch with HDMI Connection, USB 3.0 Hub and Audio
 - 4 x HDMI Cables (6ft.)
 - 2 x USB 3.0 Cables (6ft.)
 - 2 x Audio Cable Set (6ft.)
 - 1 x Power Adapter
 - 1 x Remote Port Selector
 - 1 x Quick Start Guide

*Use with video adapter may change performance

Specifications

Function	GCS1942H	Dimensions	GCS1942H
Computer Connections		Unit Dimensions	
Direct	2	Height	1.7 in. (4.4 cm)
Daisy Chain or Cascading	2	Length	13.2 in. (33.5 cm)
Port Selection		Width	6.3 in. (16.1 cm)
Hotkey, Pushbutton, Mouse, RS-232 Commands, Remote Port Selector		Unit Package Dimensions	
Console Connectors		Height	9.2 in. (23.2 cm)
Monitor	2 x HDMI (Black)	Length	21.3 in. (54.0 cm)
Keyboard	1 x USB Type A (Black)	Width	4.8 in. (12.0 cm)
Mouse	1 x USB Type A (Black)	Master Carton	
Audio	2 x 3.5mm Mini Stereo Jack (Green; Front and Rear)	Height	10.3 in. (26.0 cm)
Microphone	2 x 3.5mm Mini Stereo Jack (Pink; Front and Rear)	Length	22.0 in. (56.0 cm)
CPU Connectors		Width	15.2 in. (38.4 cm)
Monitor	4 x HDMI (Black)	Master Carton Qty.	3
Keyboard & Mouse	2 x USB 3.0 Type B (Blue)	Weight	
Audio	2 x 3.5mm Mini Stereo Jack (Green; Front)	Master Carton Wt.	23.5 lb. (10.7 kg)

Microphone		Unit Wt.	3.5 lb. (1.6 kg)
Daisy Chain	1 x RJ-45 Female		
Switches			
Port Selection	2 x Pushbutton		
Select	1 x Slide Switch		
Connectors			
USB	1 x USB 3.0 Type A (Blue; Front), 1 x USB 3.0 Type A (Blue; Rear)		
Serial	1 x RJ-45 (DCC)		
Remote Port Selector	1 x 2.5mm Audio Jack Female		
LEDs			
On Line	3 x Orange		
Selected	3 x Orange		
Audio	3 x Green		
USB Peripherals	3 x Green		
Emulation			
Keyboard	USB		
Mouse	USB		
Video Resolution	4096 x 2160 @60 Hz (4K DCI)		
Scan Interval	1-99 Seconds (Default: 5 sec.)		
Power Consumption	DC12V:3.17W:57BTU		
Environment			
Operation Temperature	32~ 104F (0~40 C)		
Storage Temperature	-4~140 F (-20~60 C)		
Humidity	0~80% RH, Non-condensing		
Housing			
Case	Metal		