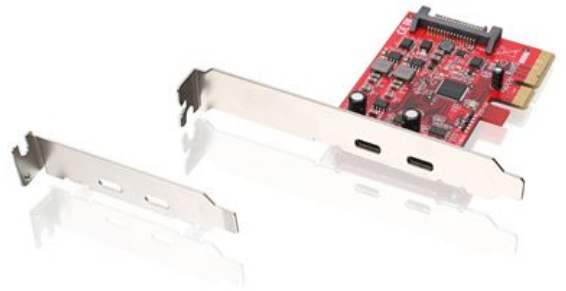


GIC3C2

2-Port SuperSpeed+ (10Gbps) USB-C PCI- Express Card



2-Port SuperSpeed+ (10Gbps) USB-C PCI-Express Card

IOGEAR's GIC3C2 2-port USB-C PCI Express card adds USB 3.1 (gen2) Type-C ports to your computer. The high performance expansion card includes a low-profile bracket and features efficient construction that fits into any x4, x8 and x16 PCIe slot. This PCIe card instantly upgrades your computer by equipping it with a lightning fast data transfer rate of 10Gbps - that's twice the speed of USB 3.0 (5Gbps) and almost 20 times that of USB 2.0 (480Mbps). Each USB port supplies a maximum power output of 5V/3A to fast-charge your devices. The card is fully compliant with USB 3.1 Specification Revision 1.0 and PCI Express Specification 3.0. With more bus bandwidth and high performance capabilities, this expansion card is perfect for transferring and accessing data with external hard drives and other high bandwidth USB 3.1 peripherals.

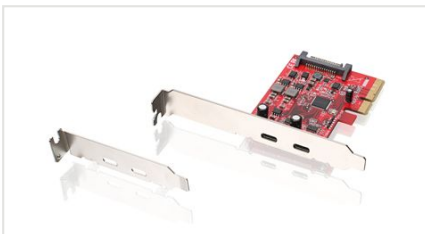
Cost Effective Backwards Compatibility

The versatility of the 2-Port USB-C PCI-Express Card makes it a cost effective solution. The USB 3.1 PCIe card is backwards compatible with USB 3.0, USB 2.0, and USB 1.1 so you can stay connected to legacy USB devices and avoid the hassle and high cost of purchasing new peripherals. It is also compatible with PCI Express 1.1, 2.0, and 3.0 specifications. For added functionality, pair the PCIe card with the [G2LU3CAM01-WT](#) USB-C to reversible USB-A cable to connect your USB-A devices.

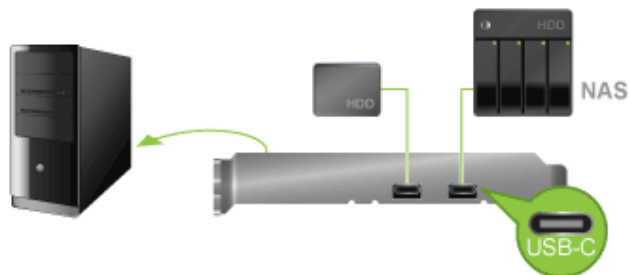
USB 3.1 Gen 2 Speeds at 10Gbps

Upgrade your computer with the fastest and most powerful USB specification available. SuperSpeed+ USB packs a big punch when it comes to speed and power, offering enhanced data transfer, charging, and connectivity to devices ranging from keyboards to hard drives. It has twice the signaling rate of USB 3.0, but also includes more efficient encoding, which allows for improved data transfer.

- Add two USB Type-C ports to your desktop computer
- USB 3.1 PCIe physical x4 Lane Host Adapter
- Two USB 3.1 Type-C downstream connectors on board
- Supports data transfer speed of up to 10Gbps
- Compliant with USB 3.1 Specification Revision 1.0
- Compliant with PCI Express Specification 3.0
- Each USB port supplies maximum 5V/3A power output



How does it work?



Requirements

- Windows® 7, Windows® 8, Windows® 8.1, Windows® 10
- Available PCIe x4, x8, or x16 slot

Package Contents

- 1 x GIC3C2
- 1 x Low-profile bracket
- 1 x Quick Start Guide
- 1 x Warranty Card

Specifications

| Function | GIC3C2 |
|---------------------------------|---|
| USB Specification | USB 3.1 Gen 2 |
| Ports | 2 USB-C Female Ports |
| Data Rate | Supports data transfer rate up to Superspeed+(10Gbps) |
| Computer Interface | PCI Express x4, x8, or x16 slot |
| Connectors (Console) | 2 x USB Type-C (F) downstream |
| Operating System Support | Windows 7, Windows 8, Windows 8.1, Windows 10 (32/64-Bit) |
| Operating Temperature | 32°F ~ 134.6°F (0°C ~ 57°C) |
| Storage Temperature | -4°F ~ 185°F (-20°C ~ 85°C) |
| Power Connections | 15-Pin SATA power connector |

| Dimensions | GIC3C2 |
|--------------------------------|------------------------|
| Unit Dimensions | |
| Height | 4.8125 inch (12.22 cm) |
| Depth | 0.75 inch (1.905 cm) |
| Length | 3.6875 inch (9.366 cm) |
| Inner Pack | |
| Width | 8.25 inch (20.96 cm) |
| Height | 7.375 inch (18.73 cm) |
| Length | 6.25 inch (15.875 cm) |
| Inner Pack Qty. | 6 |
| Unit Package Dimensions | |
| Width | 6.875 inch (17.46 cm) |
| Height | 5.625 inch (14.287 cm) |
| Depth | 1.25 inch (3.175 cm) |
| Master Carton | |
| Width | 17.5 inch (44.45 cm) |
| Height | 8.5 inch (21.60 cm) |
| Depth | 12.875 inch (32.70 cm) |
| Master Carton Qty. | 24 |
| Weight | |
| Master Carton Wt. | 9.5 lb (4.3 kgs) |
| Inner Pack Wt. | 1.95 lb (0.88 kgs) |
| Unit Pack Wt. | 0.3 lb (0.12 kgs) |
| Unit Wt. | 0.1 lb (0.04 kgs) |