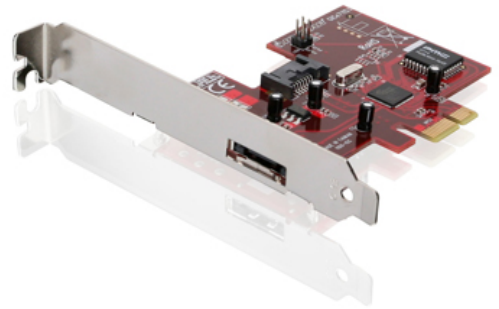


GICe711S3

1 Internal + 1 External SATA 3.0Gbps Dual Profile PCI Express Card

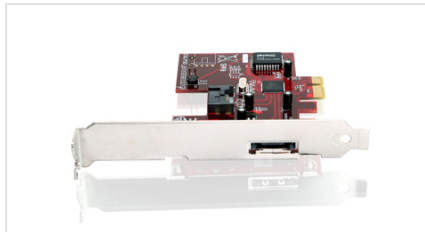
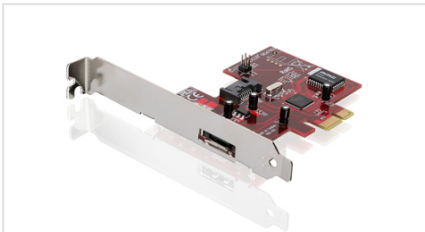


Ultra-fast SATA is 6 times faster* than Hi-Speed USB 2.0 and FireWire 400

The IOGEAR SATA 3.0Gbps Dual Profile PCI Express Card adds 1 internal and 1 external SATA port to your desktop computer. It is great for users who want to add SATA connectivity to their computers but do not want to buy a whole new computer. Devices commonly used with this host adapter are next generation hard drives, Blu-ray optical drives and HD-DVD drives. The dual profile design of this adapter makes it fit into low profile or standard cases.

This card is designed to work on the high-bandwidth PCI-Express interface, effectively quadrupling the amount of available computing bandwidth over the traditional PCI interface. This results in smoother streaming video, faster music sharing and lightning-fast access to mass-storage devices.

- Supports 1-lane PCI Express Bus (PCIe x1)
- Two independent Serial ATA channels to ensure maximum performance
- Dual profile allows use in low profile and standard cases
- Backward compatible to SATA/150 (1.5Gb/s)
- Two pin headers for case LED connection
- Supports Native Command Queuing (NCQ), port multiplier, hot-plug, and hot-swapping



Requirements

- Windows 2000, XP and Windows Server 2003
- Windows Vista 64 bit / 32 bit
- Available PCI Express slot

*Note: Enclosed Card will not fit into a standard PCI slot.

Package Contents

- 1 eSATA PCI-Express Card
- 1 Driver CD
- 1 Low PCI Bracket
- 1 SATA Cable
- 1 Quick Start Guide
- 1 Registration / Warranty Card

Specifications

| Function | GICe711S3 |
|---------------------------------|---------------------------------------|
| Operating System Support | Windows 2000, XP, VISTA & MAC OS 10.4 |
| Transfer Rate | up to 3Gbps / 3000 Mbps |
| Chipset | Sil 3132 |
| Connectors | |
| SATA / eSATA | 1 internal & 1 external |

| Dimensions | GICe711S3 |
|--------------------------------|---------------------|
| POP Information | |
| 10" Peg Hook | 7 |
| 6" Peg Hook | 4 |
| Unit Dimensions | |
| Height | 4.5 in |
| Depth | 0.45 in |
| Width | 5 in |
| Inner Pack | |
| Height | 7.5 in (19.05 cm) |
| Length | 8.6 in (21.84 cm) |
| Width | 7.6 in (19.3 cm) |
| Inner Pack Qty. | 6 units |
| Unit Package Dimensions | |
| Height | 7 in (17.78 cm) |
| Length | 7.125 in (18 cm) |
| Width | 1.3 in (3.3 cm) |
| Master Carton | |
| Height | 8.6 in (21.84 cm) |
| Width | 15.512 in (39.4 cm) |
| Depth | 9.5 in (24.13 cm) |
| Master Carton Qty. | 12 Units |
| Weight | |
| Master Carton Wt. | 7 lb. |
| Inner Pack Wt. | 2.8 lb. |
| Unit Pack Wt. | 0.625 lb. |
| Unit Wt. | 0.19 lbs |