



Quick Start Guide

Compact Wireless-N USB Adapter

GWU625
PART NO. Q1230-a

Package Contents

- 1 x Wireless-N USB Adapter
- 1 x Quick Start Guide
- 1 x Installation CD
- 1 x Warranty / Registration Card

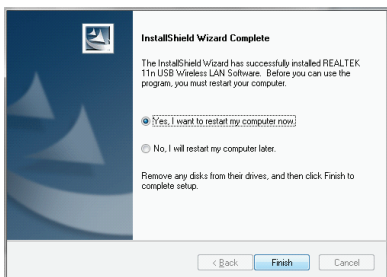
Requirements

- Windows XP, Windows Vista, Windows 7
- Mac OS X v10.4 and above
- Linux Fedora 10 (Kernel: 2.6.27.5-117)
- Available USB port
- Wireless network

1. Insert the CD-ROM, double-click Setup.exe to start the software installation.



2. Follow the onscreen instructions to install the driver software.
3. Restart your computer when installation is completed.



Insert the USB Adapter

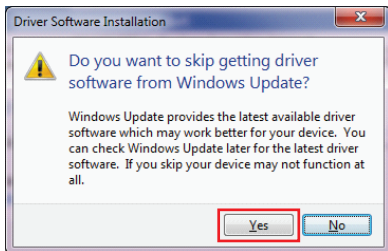
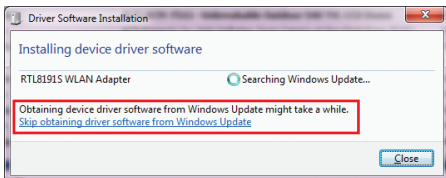
1. After your computer is restarted, insert the Wireless-N USB Adapter to an available USB port.




2. A new Wireless icon  will appear in the system tray after Windows finishes the driver installation process.

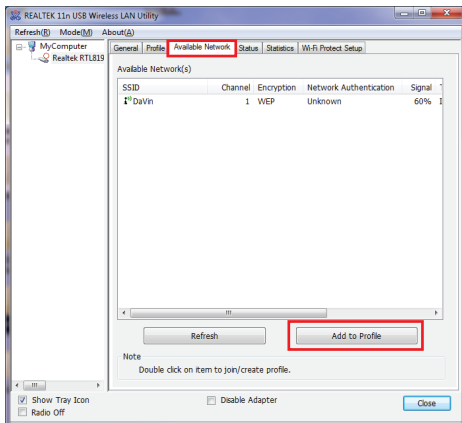


3. If your Windows system tries to obtain the driver from Windows Update, please click “**Skip obtaining driver software from Windows Update**”. Windows should load the driver you just installed automatically.

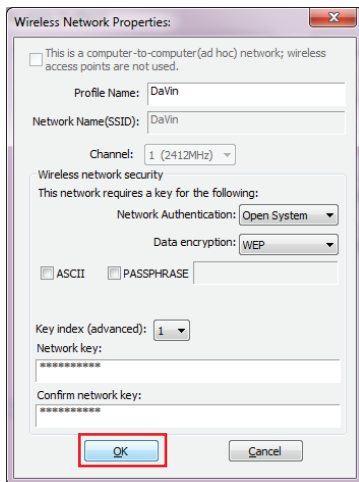


Connect to a Wireless Network

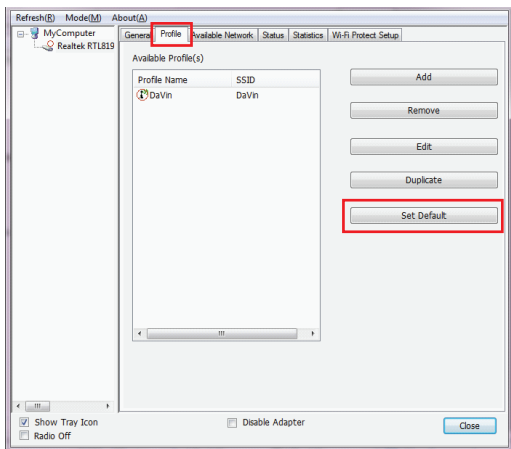
1. Double-click on the Wireless icon  in the system tray to open the Wireless setting wizard.
2. Click the **“Available Network”** tab and wait for the wizard to search for wireless networks. The available networks are listed in the table. Select your network and click **“Add to Profile”**



3. A profile window will appear. You can edit your profile name, configure wireless security and other settings. Click “**OK**” when done. If you are connecting to your own wireless network, you may want to configure wireless security on your router if you have not already done so. Please refer to your router’s manual for more instructions.

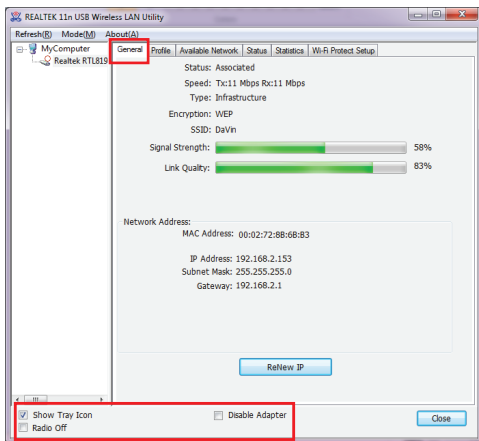


4. You may click the **“Profile”** tab and select your network to **“Set Default”**.



5. The wizard will now connect to your wireless network. You may click the “**General**” tab to view the connection status, “Signal Strength” and “Link Quality”.

On the bottom of the window, you can select if you want to show the wireless icon in the system tray or disable wireless signal / wireless adapter to conserve battery power or meet in-flight requirements.

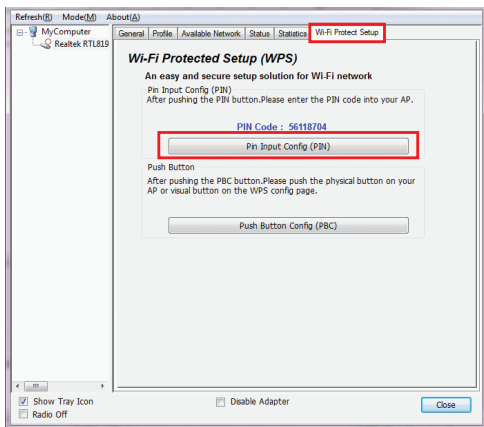


Wi-Fi Protected Setup™ - PIN

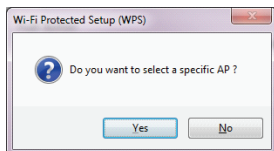
WPS (WiFi Protected Setup) is a simple and secured way to connect your computer to an existing network. Before you start, please make sure your wireless router / AP supports WPS feature. This optional certification feature provides two easy-to-use methods to configure a network: Push-Button Configuration or PIN / numeric code.

- **PIN Configuration:**

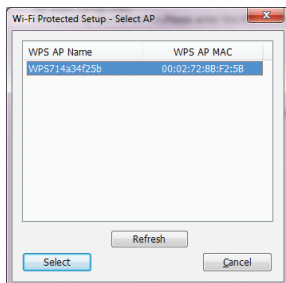
1. Click the “**Pin Input Config**” button.



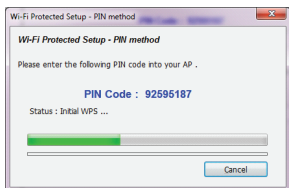
2. Click **“Yes”** to select a specific AP



3. Select the AP that you want to configure.



4. Wait for your wireless router to configure the security setting.



5. Refer to your wireless router's manual, enter the generated PIN code into your wireless router setting page. The screen you see may vary.

Wi-Fi Protected Setup

This page allows you to change the setting for WPS (Wi-Fi Protected Setup). Using this feature could let your wireless client automatically synchronize its setting and connect to the Access Point in a minute without any hassle.

☐ Disable WPS

WPS Status: ☒ Configured ☐ UnConfigured

Self-PIN Number:

Push Button Configuration:

Current Key Info:

Authentication	Encryption	Key
Open	None	N/A

Client PIN Number:

Wi-Fi Protected Setup™ - PBC

• Push-button Configuration

1. Press and hold the physical button on the side of your Wireless-N USB adapter for 5 seconds or the virtual button on the WPS setup page.



General Profile Available Network Status Statistics Wi-Fi Protected Setup

Wi-Fi Protected Setup (WPS)

An easy and secure setup solution for Wi-Fi network

Pin Input Config (PIN)
After pushing the PIN button, please enter the PIN code into your AP.

PIN Code : 56118704

Push Button
After pushing the PBC button, please push the physical button on your AP or visual button on the WPS config page.

2. Refer to your wireless router's manual, press the physical button on your router or virtual WPS button on your wireless router setting page. The screen you see may vary.

Wi-Fi Protected Setup

This page allows you to change the setting for WPS (Wi-Fi Protected Setup). Using this feature could let your wireless client automatically synchronize its setting and connect to the Access Point in a minute without any hassle.

☐ Disable WPS

WPS Status:

☒ Configured ☐ UnConfigured

Self-PIN Number:

95661469

Regenerate PIN

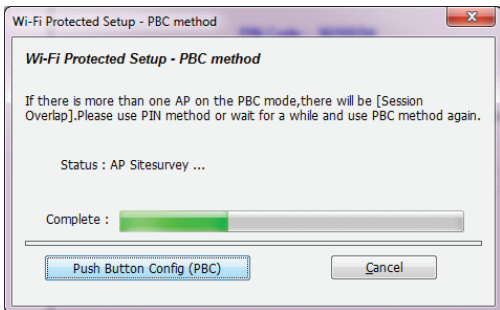
Push Button Configuration:

Start PBC

Apply Changes

Reset

Wait for your wireless router to configure the security setting.



Federal Communications Commission (FCC) Statement

This product has been tested and found to comply with the limits for a Class B device, pursuant to part 15 of the FCC Rules. It is intended for use in residential setting, but may also be used in commercial or industrial setting.

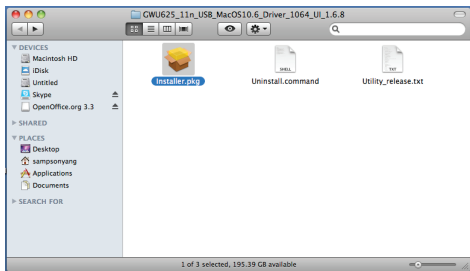
CE Compliance

This device has been tested and found to comply with the following European Union directives: Electromagnetic Capability (89/336/EMC), Low Voltage (73/23/EEC) and R&TTED (1999/5/EC).

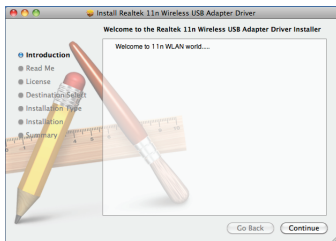
Software Installation - Mac

NOTE: Do not install the GWU625 USB Wifi Dongle until prompted to.

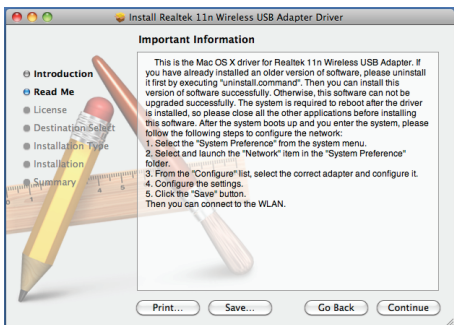
1. Open the Mac driver folder on the CD and double click on “Installer.pkg”



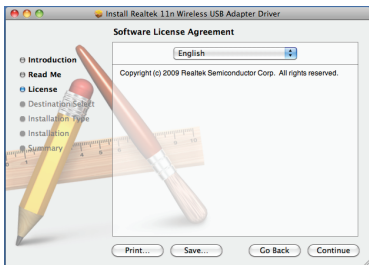
2. Once the installer starts, click “Continue”.



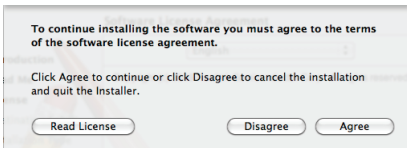
3. Next, click “Continue”.



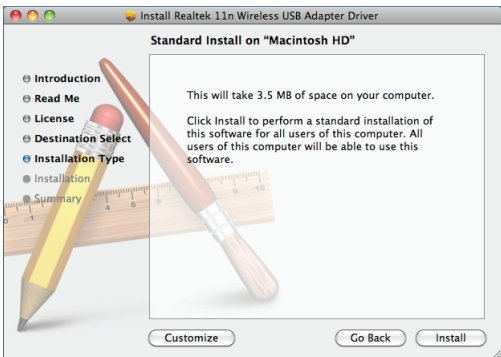
4. Select your language and click “Continue”.



5. Click “Agree” to continue.



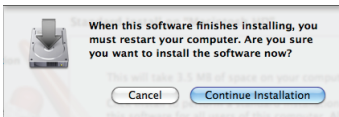
6. Click “Install” to install the driver and utility.



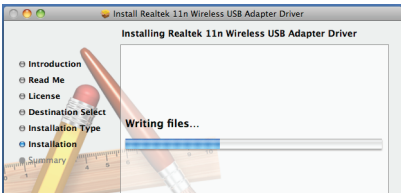
7. Enter your user name and password and click “OK”.



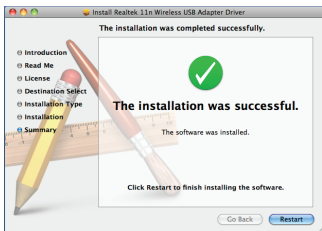
8. Click “Continue Installation” to continue.



9. The installation wizard will now install the necessary files.



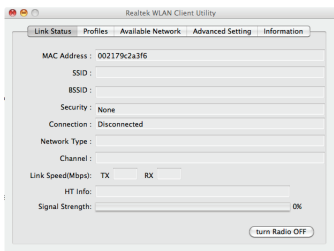
10. Once the wizard has finished installing the drivers, the Installation Was Successful screen will appear. Click “Restart” to complete the installation and restart your computer.



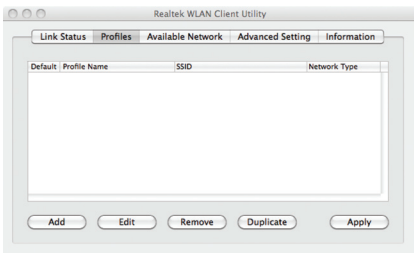
11. Once the computer has restarted, open a finder window and click on Applications. You should see the Realtek WLAN Client Utility.



12. At this time, please insert the GWU625 USB Wifi Dongle into the USB port on your computer. The Realtek WLAN Client Utility should automatically start.



13. Click on the “Profiles” tab at the top of the utility. Next click the “Add” button at the bottom of the utility to set up the GWU625 for your network.



14. Next, enter a profile name for your connection, the SSID for your wireless network, the security settings and click “OK”.

Profile Properties

Profile Name :

SSID :

☐ This is a computer-to-computer (AdHoc) network; wireless access points are not used.

Channel :

Wireless Network Security Properties

This network requires a key for the following :

Network Authentication :

Data Encryption :

☐ ASCII

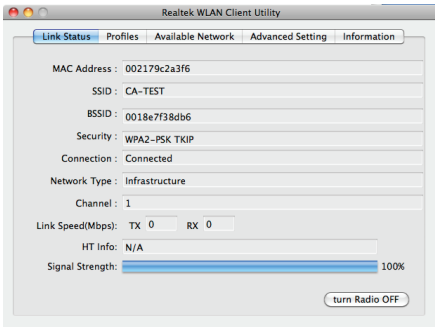
Network key :

Confirm network key :

Key index (advanced) :

OK Cancel

15. Once you enter all your wireless network settings, the link status tab will show if you are connected. If after 30 seconds the status does not show Connected, please go back and verify all your settings are correct.



Limited Warranty

WE'RE HERE TO HELP YOU!

NEED ASSISTANCE SETTING UP THIS PRODUCT?

Make sure you:

1. Use the live chat at www.iogear.com to try and solve any issues you may be having with the product
2. Visit the Tech Info Library/FAQ on www.iogear.com (under the Support tab)
3. Call the tech support line at 1-866-946-4327 (U.S. only) or 949-453-8782

Warranty Information

This product carries a 3 Year Limited Warranty.

For the terms and conditions of this warranty, please go to <http://www.iogear.com/support/warranty> or call 1-866-946-4327

Contact

Toll Free 866-946-4327 (USA)

Phone: 949-453-8782

19641 Da Vinci

Foothill Ranch, CA 92610

www.iogear.com

support@iogear.com



About Us



FUN

IOGEAR offers connectivity solutions that are innovative, fun, and stylish, helping people enjoy daily life using our high technology products.



GREEN

IOGEAR is an environmentally conscious company that emphasizes the importance of conserving natural resources. The use of our technology solutions helps reduce electronic waste.